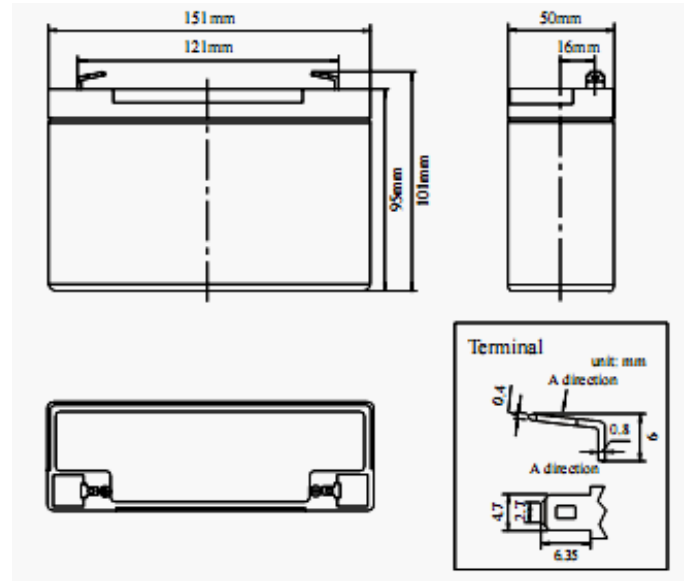


Product Image



Product Dimensions



Characteristics

| | | |
|---|---------------------------|---|
| Nominal Voltage | | 6V |
| Nominal Capacity (20 hour rate) | | 12Ah |
| Capacity 25°C (77°F) | 10 hour rate (1.14A) | 11.4Ah |
| | 5 hour rate (2.14A) | 10.7Ah |
| | 1 hour rate (7.92A) | 7.92Ah |
| Internal Resistance | Full Charged Battery 25°C | ≤12m Ω |
| Capacity affected by Temperature (10 hour) | 40°C (104°F) | 102% |
| | 25°C (77°F) | 100% |
| | 0°C (32°F) | 85% |
| | -15°C (5°F) | 65% |
| Self-Discharge 25°C (77°F) Capacity | after 3 month storage | 90% |
| | after 6 month storage | 80% |
| | after 12 month storage | 62% |
| Charge (Constant Voltage) 25°C (77°F) | Float | Initial Charging Current Less than 3.6A Voltage 6.8-6.9V |
| | Cycle | Initial Charging Current Less than 3.6A Voltage 7.2-7.5V |

Packaging

| | | |
|-----------------------|-----------------|---------------|
| Battery Dimensions | Length | 151mm |
| | Width | 50mm |
| | Height | 95mm |
| | Total Height | 101mm |
| Box Dimensions | Length | 289mm |
| | Width | 165mm |
| | Height | 141mm |
| Quantity Per Box | | 5 pcs per box |
| Net weight Per Cell | | 1.80 kg±100g |
| Net weight Per Box | | 9.0kg |
| Gross Weight | | 9.4kg |

Discharge Constant Current per Cell (Amperes at 77°F 25°C)

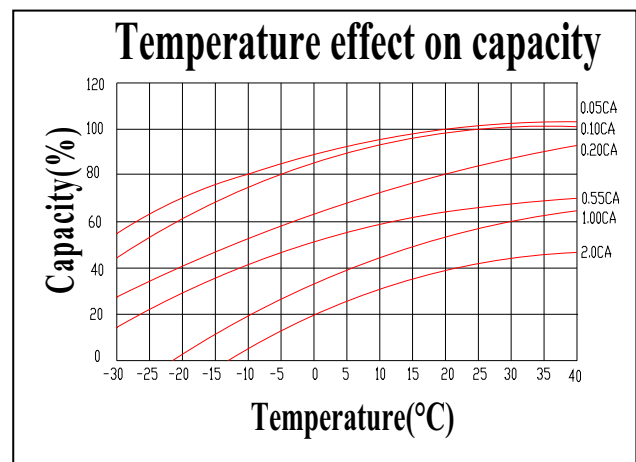
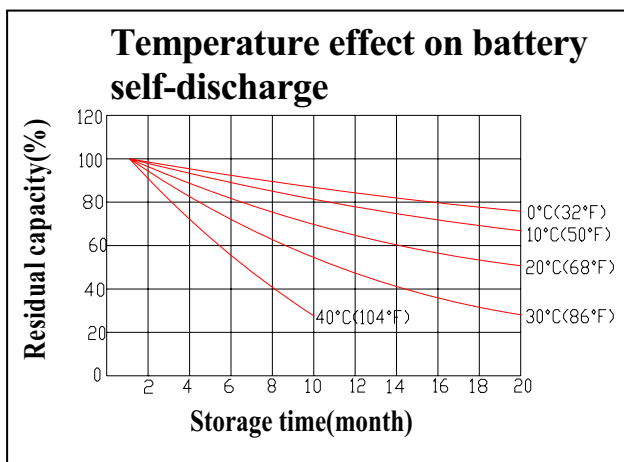
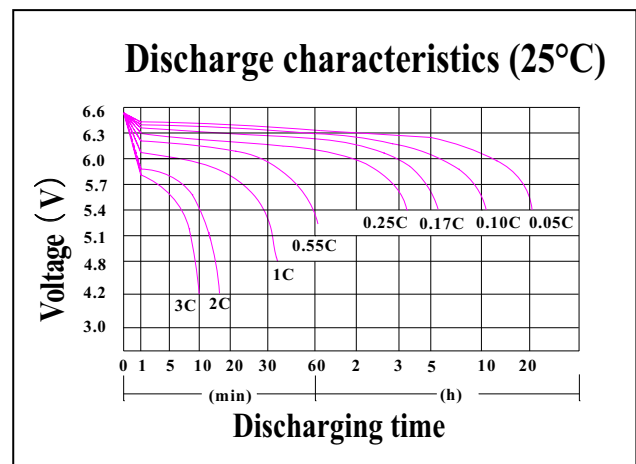
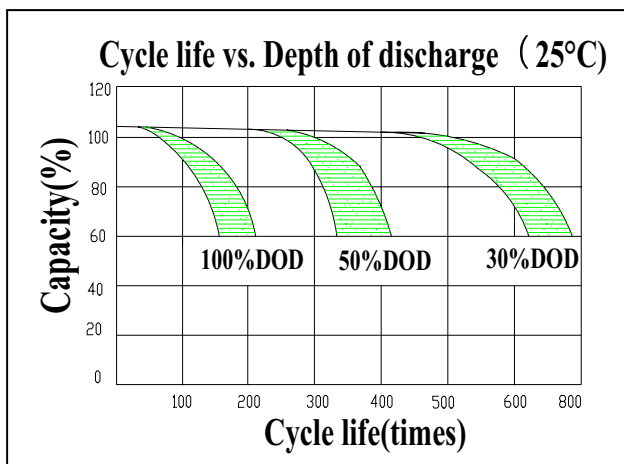
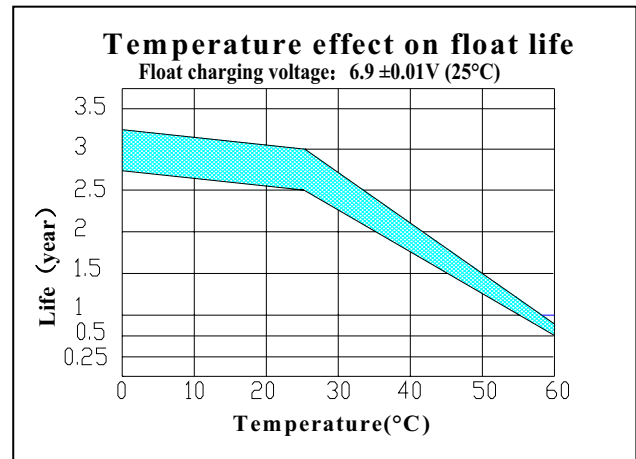
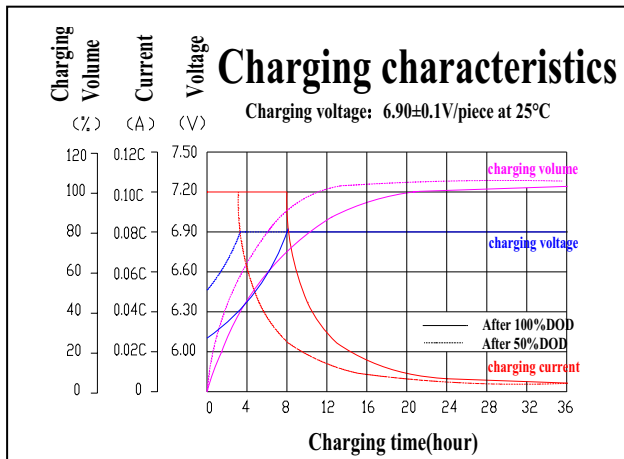
| F.V/Time | 5min | 10min | 15min | 30min | 45min | 1h | 2h | 3h | 5h | 8h | 10h | 20h |
|----------|-------|-------|-------|-------|-------|------|------|------|------|------|------|------|
| 1.60V | 39.60 | 26.40 | 19.86 | 13.20 | 9.24 | 7.92 | 4.95 | 3.39 | 2.26 | 1.52 | 1.26 | 0.66 |
| 1.65V | 38.88 | 25.92 | 19.50 | 12.96 | 9.07 | 7.78 | 4.86 | 3.33 | 2.22 | 1.49 | 1.23 | 0.65 |
| 1.70V | 38.16 | 25.44 | 19.14 | 12.72 | 8.90 | 7.63 | 4.77 | 3.27 | 2.18 | 1.46 | 1.21 | 0.64 |
| 1.75V | 37.44 | 24.96 | 18.78 | 12.48 | 8.74 | 7.49 | 4.68 | 3.21 | 2.14 | 1.44 | 1.19 | 0.62 |
| 1.80V | 36.00 | 24.00 | 18.06 | 12.00 | 8.40 | 7.20 | 4.50 | 3.08 | 2.06 | 1.38 | 1.14 | 0.60 |

Discharge Constant Power per Cell (Watts at 77°F 25°C)

| F.V/Time | 5min | 10min | 15min | 30min | 45min | 1h | 2h | 3h | 5h | 8h | 10h | 20h |
|----------|-------|-------|-------|-------|-------|-------|------|------|------|------|------|------|
| 1.60V | 76.23 | 50.82 | 38.24 | 25.41 | 17.79 | 15.25 | 9.53 | 6.53 | 4.35 | 2.93 | 2.42 | 1.27 |
| 1.65V | 74.84 | 49.90 | 37.54 | 24.95 | 17.46 | 14.97 | 9.36 | 6.41 | 4.27 | 2.87 | 2.37 | 1.25 |
| 1.70V | 73.46 | 48.97 | 36.85 | 24.49 | 17.14 | 14.69 | 9.18 | 6.29 | 4.20 | 2.82 | 2.33 | 1.22 |
| 1.75V | 72.07 | 48.05 | 36.15 | 24.02 | 16.82 | 14.41 | 9.01 | 6.17 | 4.12 | 2.77 | 2.29 | 1.20 |
| 1.80V | 69.30 | 46.20 | 34.76 | 23.10 | 16.17 | 13.86 | 8.66 | 5.94 | 3.96 | 2.66 | 2.20 | 1.16 |

Note The above data are average values, and can be obtained within 3 charge/discharge cycles. These are not minimum values. Cell and battery designs/specifications are subject to modification without notice. Contact **MCA** for the latest information.

Performance Characteristics



Battery Construction

| Component | Positive plate | Negative plate | Container | Cover | Safety valve | Terminal | Separator | Electrolyte |
|--------------|----------------|----------------|-----------|-------|--------------|----------|------------|---------------|
| Raw material | Lead dioxide | Lead | ABS | ABS | Si-Rubber | Copper | Fiberglass | Sulfuric acid |